

1.0. FINISHING MATERIALS

1.1. Tiles

In the apartment, large-format tiles from the Monumental collection by Paradyż are used. These are stoneware tiles with excellent technical parameters (low water absorption, high hardness as well as abrasion and frost resistance). Besides, the tiles are rectified, which means that we can achieve minimal grout width and a smooth tiled wall surface.

Rectification is a special way of processing the tile edge – it is cut perfectly at right angles. During the manufacturing process of such tiles, discrepancies in the size of the individual pieces are eliminated, resulting in a high-quality product.

The large format that has been planned is important in terms of both interior aesthetics and functionality. Owing to the formats in use (60 x 120 cm and 120 x 120 cm), we are able to minimise the number of joints and achieve a monolithic surface effect like natural stone. The interior appears more elegant and the surface itself is easier to clean.

The uniqueness of the tiles is also an important feature. In the case of low-quality products, the pattern is repeated on the wall thus creating an artificial effect. Tiles from the collection which has been selected have unrepeatable patterns, which give the room a unique character.

Kitchenette:



The tiles in the kitchenette have a very distinctive colour, not found on the market. The range available from other manufacturers does not include such a colour. The idea is for this element to refer to the colour of water, to bring that colour into the interior. It is an original product.

Bathroom:

The bathroom uses a product from the same collection, but in a different colour, i.e. that of natural stone. The distinctive veins are intended to make a reference to the stones of a water cave. The combination of neutral colours and soft lighting is intended to create a spa atmosphere. The interior is calm and cosy. The all-purpose tile colour was chosen to match many accessories. The glossy surface allows for an elegant effect and reflects light, visually enlarging the space.

Floor:

The tiles used on the floor are also high quality stoneware (made by the Tubądzin company) and have the best technical parameters. In addition to parameters as those of the wall tiles, this kind of tiles also has anti-skid properties. The calm colour pattern is intended as a background for other, more expressive materials.

1.2 Carpeting

MANUFACTURER: Ege Carpets

Since its inception, Ege Carpets has given the absolute priority to the highest quality. Today, Ege prides itself on high-end products, regardless of the basis weight or sublayer. When we choose Ege, we know it is a premium product.

In 2019, Ege Carpets implemented a strategy plan based on the UN objectives. Today, Ege Carpets is the only carpet-making company in the world to stand for 100% Cradle to Cradle™* certification. It is also the first brand to achieve full certification for its production in a record time of 5 years.

The **cradle to cradle** is a product design model that considers all aspects of the product's life. The model's name refers to the cradle-to-grave design concept, replacing the 'grave' with another 'cradle' to illustrate the essence of a circular economy. The main assumption of the cradle to cradle model is to design and manufacture products with the aim of maximising their use even after their death, thus minimising the negative impact of production and maximising the positive impact on the environment and human health.

Products within the cradle to cradle model should be recyclable at the end of their life in a closed loop within one of two cycles: technological and biological. In the first cycle, materials are reused to make new products. In the biological cycle, the key is to process the materials in such a way that they can be used, for example, as fertiliser. The cradle to cradle model means five principles that a company should follow if it wants to introduce this model into its operations:

- 1) **Health safety** – all materials must score positively in environmental and human health criteria.
- 2) The drive to **reuse as many materials as possible**. These can be used as improvers in industrial production (the technical zone) or as fertiliser (the biosphere).
- 3) **Use of energy from renewable sources**.
- 4) Responsible and efficient **water management**.
- 5) Being guided by the care for employees and **social responsibility** along the value chain.

The company must take steps to neutralise its carbon footprint and use 100% renewable energy. Water for production must be essentially in drinking water quality. Finally, the company must operate according to internationally recognised standards of social responsibility. Cradle to Cradle is synonymous with responsible consumption and production. One of the world's biggest challenges is plastic waste.

Plastic decomposes very slowly and poses a significant threat to the environment, especially water. Ege Carpets uses plastic waste to manufacture carpets and packaging. The fibre used in many of EGE's carpets, ECONYL, consists of reclaimed industrial waste, including fishing nets. The ECOTRUST backing consists of 100% recycled plastic bottles. The bottom layer of the lining, which separates the fibres from the backing, is also mainly composed of waste materials.

The same applies to the tubes, which are manufactured only from recycled materials. In general, a huge amount of plastic is reused in EGE products, instead of lying in landfills and burdening the environment.

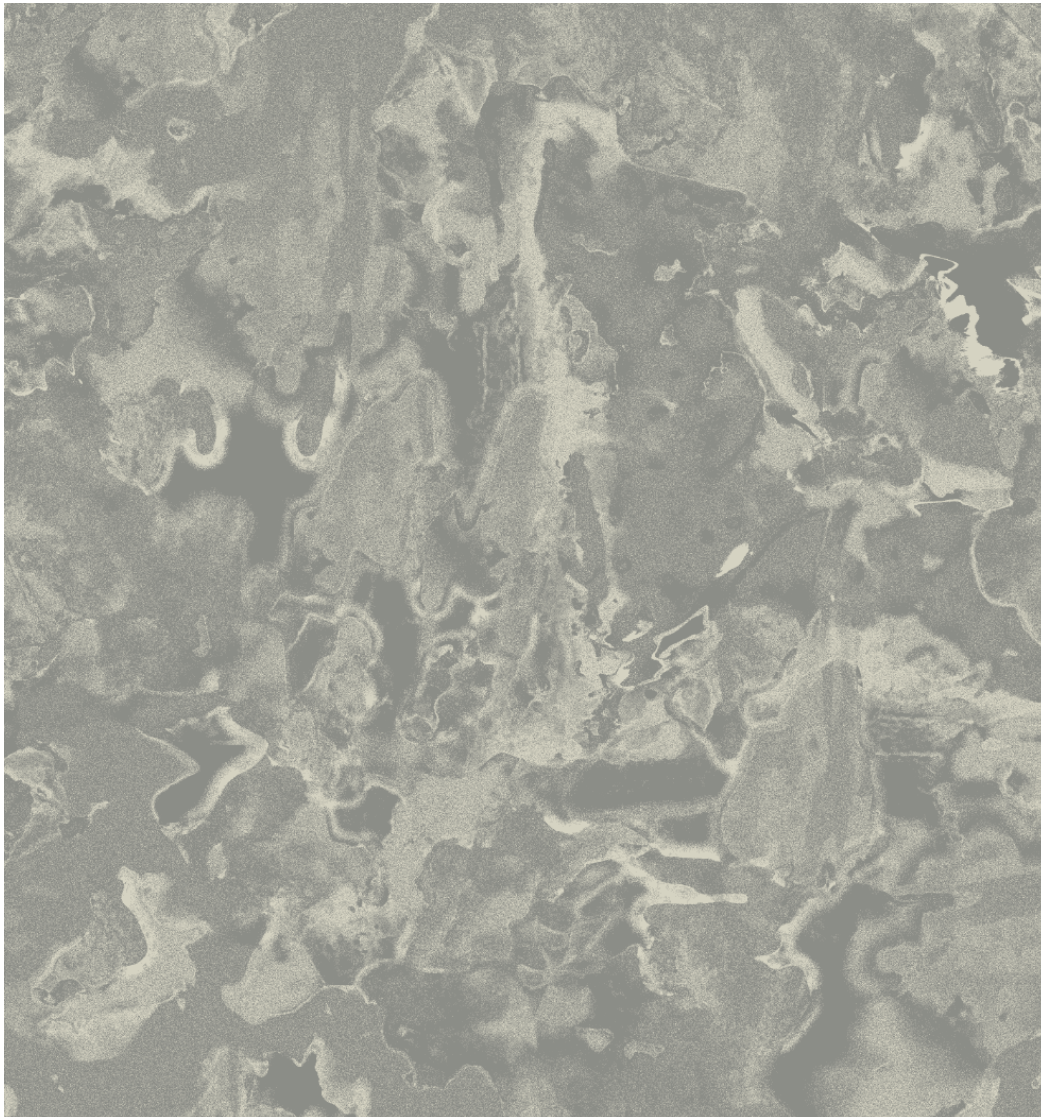
"Green" energy is not part of Ege Carpets' production profile. On the other hand, however, Ege's factories use such huge amounts of energy that this is an area where significant improvements can be made. 100% of the electricity for Ege's buildings comes from renewable sources, namely coastal wind farms. EGE is also in the process of adapting its factories to use biogas instead of fossil gas. EGE has the ambition to become CO₂-positive by 2030.

CARPET IN THE APARTMENT:

PATTERN: **ReForm Terra**

Each pattern for Ege is designed by a renowned designer and is patented. The manufacturer has only one distributor in Poland and the chosen pattern is unique and inimitable. We are confident that the product will stand out.

The pattern used in the apartment is meant to refer to gently agitated water or watercolours. It is a reference to what we see outside the window. The ReForm Terra collection itself is inspired by landscapes from different parts of the world. Our particular pattern, according to the designer (Karen Nybo), is inspired by a deep woodland lake. This is where the choice of this pattern comes from.



1.3 WALLCOVERINGS

High-quality vinyl wallcoverings are used in the interiors.

Vinyl wallcoverings are one of the many types of wallcovering. Unlike others (paper or fleece) that kind is covered with a special PVC foil, the so-called vinyl. Vinyl wallcoverings are slightly more expensive than other kinds. However, the higher price goes hand in hand with much better quality. It is the highest quality when it comes to wallcoverings.

Vinyl wallcoverings have many advantages. They are distinguished by high scratch resistance. They are easy to maintain, as you can remove dirt from them both dry and wet without worrying about the colour and pattern. In addition, vinyl wallcoverings are resistant to abrasion and common cleaning chemicals. Vinyl wallcoverings are also resistant to sunlight. They can be successfully used for interior decoration in rooms that receive a lot of sunlight. We can rest assured that the aesthetic appearance will be maintained for many years.

Vinyl wallcoverings are resistant to heat and moisture. In addition, vinyl has strong insulating properties. As a result, it will soundproof the interior without disturbing the air circulation in the walls and without retaining moisture. It is worth noting that vinyl wallcoverings are bacteriostatic. This means that they inhibit the growth and reproduction of bacteria.

SMOOTH WALLCOVERINGS – in show apartment no. 1:

MANUFACTURER: **Newmor Wallcoverings**

<https://newmor.pl/katalog/Newmor-Wallcoverings>

Wallcoverings means **Newmor Wallcoverings**. It is an English manufacturer with a rich history and experience. The company has been in existence since 1967 and supplied high-performance products to ensure that they can be used for many years while maintaining aesthetic qualities. The company specialises in servicing hotels and other commercial properties and has distribution centres in more than 60 countries. All the products on offer are manufactured using a technical process that ensures minimal post-production waste.

PATTERN: **ZENITH**

The smooth wallcovering used in the interior is NEWMOR's own product, the **Zenith** model, distinguished by elegant textures with metallic features. The surface of the wallcovering nicely reflects light and brings warmth to the interior. The texture itself makes the material change its character depending on the lighting.



SMOOTH wallcoverings – in show apartment No. 2 (after alteration):

DISTRIBUTOR: **Vesstige**MANUFACTURER: **Versa****Wallcoverings**<https://versawallcovering.com/>

For more than 14 years, Vesstige has been providing top-quality wallcovering and flooring solutions. Owing to those, private interiors, hotels and public buildings uniquely beautiful. Vesstige offers a first-class service – the comprehensive range of offer and care by our specialists – from design to installation. Vesstige, which cooperates with architects and interior designers, has realised hundreds of objects of various occupancy types, from private bedrooms, through traffic routes in shopping malls, to complex wallcovering and flooring in hotel facilities. The company adheres to the zero-compromise principle – owing to our flexibility, individual approach, rich collections and customised production orders, you will achieve the effect you want on your wall and floor. Vesstige is the authorised and exclusive representative of the largest US wallcovering manufacturers, i.e. J. Josephson-Bolta, Genon, Vycon, Isi Wallcovering - Versa, Roysons Corporation, Phillip Jeffries Ltd, as well as Girloon, Infloor, Van Besouw and Fletco Carpets for commercial and residential interiors.

Versa Wallcoverings, the designer of wallcovering planned for the apartment, is an award-winning US manufacturer with a history dating back to 1955. Versa is one of the world's largest factories supplying materials to hospitality and commercial properties, which boasts a wealth of history and experience. Like other conscious manufacturers, Versa one strives to be environmentally conscious and uses waste materials to produce wallcoverings.



"TREES" WALLCOVERING:

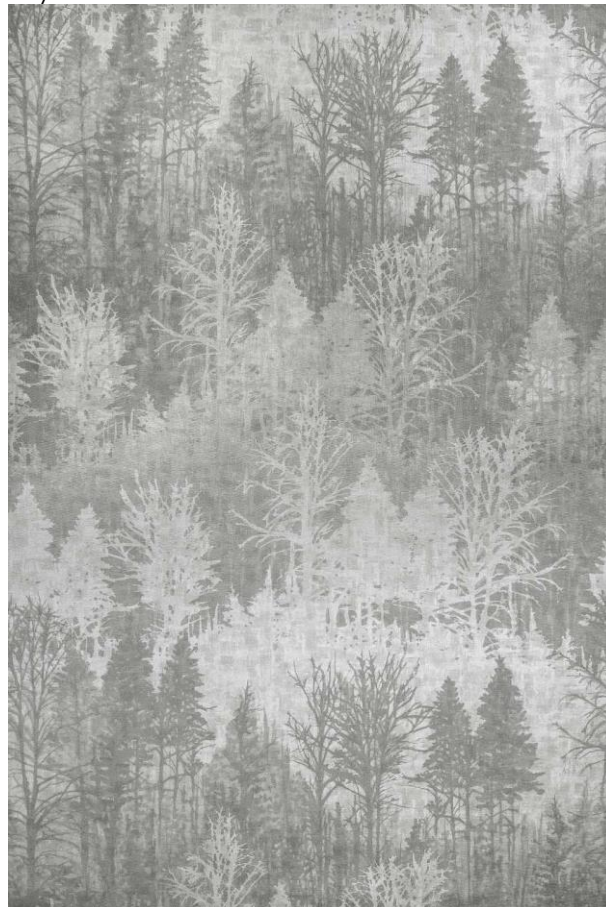
MANUFACTURER: **Len Tex Wallcoverings** (a company whose distributor is Newmor Polska)
<https://newmor.pl/katalog/len-tex-wallcoverings>

In turn, the tree pattern wallcovering is a uniquely American product from Len Tex Wallcoverings. It is a wallcovering specially imported from the United States. The company has been on the market since 1983. Len-Tex wallcoverings have highly effective bacteriostatic properties, so they can be successfully used even in such demanding facilities as hospitals or medical clinics, but also in hotels, restaurants and offices. Len-Tex is a competitive choice at a time when health and safety are at the forefront.

Len-Tex is the author of the ground-breaking CLEAN VINYL MANUFACTURING TECHNOLOGY, which makes it possible to eliminate harmful substances in the room, ensuring the best air quality. Len-Tex is the only manufacturer in the world to have received the gold SCS Indoor (Scientific Certification System) confirming its high low-emission performance, based on health and life protection standards; the company also meets the most stringent requirements of the interior finish standard confirmed by the Indoor Advantage Gold certification.

PATTERN: ARBOREAL

Arboreal, meaning "life in the trees", promises to bring beauty and tranquillity to interiors. This ethereal pattern, based on an original watercolour, has been juxtaposed with embossing on canvas to create the look of a true work of art. This collection was inspired, created and produced in New England. An important unique feature of this product is the sheer texture of the backing available only in this case.



2.0. EQUIPMENT – FIXED ELEMENTS

2.1 CERAMIC WARE – GROHE

The **GROHE Euro Ceramic** wall-hung toilet bowl with a horizontal drain is designed for ultimate functionality and excellent design. The wall-mount model with dimensions of 540 mm x 374 mm is designed to be combined with concealed cisterns. The model's lack of external elements and concealed fastenings save valuable space and make the bathroom area appear larger. The toilet bowl is made of smooth, white ceramic material with high scratch and damage resistance and the Triple Vortex technology uses as many as three water outlets, which create a powerful water vortex. The super-powerful, yet quiet and non-splashing jet perfectly cleans the toilet bowl at every point, guaranteeing easy hygiene maintenance. The GROHE Euro Ceramic flush volume is 5/3 L, a feature unique to this product.

GROHE's innovative triple flush system creates a very powerful yet quiet vortex of water that thoroughly flushes the entire interior of the bowl. The vortex from the cistern, although violent, does not cause water to splash outside the bowl and reduces water consumption. The cistern uses dual-flush technology so that the user uses only 5 litres of water for a standard flush and just 3 litres for a short flush. The flow flush toilet bowl has three water outlets whose flow effectively cleans the toilet, resulting in a perfectly clean bowl.



2.2 BATHROOM FITTINGS – GROHE SHOWER TAP

https://cdn.cloud.grohe.com/Literature/Brochures/pl_PL/Broszura_GROHE_Grohtherm_1000_Performance_05.2020/original/Broszura_GROHE_Grohtherm_1000_Performance_05.2020.pdf

The following features apply to both taps with and without a rainshower, as they are from the same series.

GROHTHERM 1000 PERFORMANCE THERMOSTATIC SHOWER MIXER, DN 15, WITH SHOWER SET



GROHE THERMOSTATIC MIXER WITH COOLTOUCH TECHNOLOGY AND PROGRIP HANDLE

GROHE TurboStat ensures a constant water temperature with no fluctuations during a shower. The intelligently designed ProGrip handle allows precise control over water flow and temperature, while the GROHE CoolTouch internal cooling channel eliminates the risk of scalding on the tap surface.

GROHE COOLTOUCH TECHNOLOGY – SAFETY FIRST

The GROHE CoolTouch technology ensures that the tap's outer shell never gets hotter than the optimum water temperature. GROHE thermostatic taps feature an innovative cooling channel that creates a barrier between the hot water and the chrome surface, so there is no fear of scalding from touching the tap. This safety measure is particularly useful in bathrooms used by children and the elderly. After all, they are not always able to judge whether something they are touching could be dangerous to them.

OVERVIEW OF FUNCTIONS

- 100% GROHE CoolTouch safety – the tap surface does not heat up to a temperature higher than the water temperature
- GROHE TurboStat maintains a constant water temperature and provides protection against scalding
- ProGrip ergonomic and precise tap handling even with soapy hands
- SafeStop water temperature lock up to 38°C, protects against increasing the temperature
- SafeStop Plus optional water temperature limiter up to 43°C

- GROHE EcoButton reduces water consumption by 50%
- GROHE AquaDimmer Eco water volume control with jet selector

2.3 BATHROOM FITTINGS – GROHE WASH BASIN TAP

With its stylish cylindrical form and StarLight® shiny coating, the GROHE Essence wash basin tap a highly aesthetic yet delicate piece. The optimised spout length provides plenty of freedom of movement when brushing your teeth or washing your hands. The tap also features a special EcoJoy™ aerator which reduces the water flow to 5.7 l/min without affecting the flow rate. This reduces water consumption costs and contributes to protecting our environment. To ensure that the tap's lifespan is counted in years, we have incorporated a SilkMove® ceramic cartridge. It makes operating the lever light and precise, and setting the right temperature and water jet strength quicker than ever. GROHE Essence will take your bathroom to the highest level of functionality.



2.4 RADAWAY SHOWER DOOR

Radaway is a manufacturer of high-quality, comfortable yet designer shower enclosures. The company has been operating on the market since 2002. Over the years, the company has achieved expert status in the field of shower enclosures. Radaway's portfolio includes many hotel and office buildings. The Nes series of shower enclosures is characterised by modern design and elegance, which impresses with its versatility on the one hand and originality on the other. The variety of models allows them to be used to arrange a room in many styles. The advantage of the series is a special system allowing the levelling of wall curvature up to 15 mm.

PRODUCT FEATURES

6 MM GLASS

6 mm toughened safety glass, compliant with PN:EN 12150:1.

FIXING SYSTEM

Wall fixing system with profiles to compensate for wall curvature.

PIPE HINGE

Allows the door to open inwards and outwards the cabin.

DOOR LIFTING AND LOWERING MECHANISM

Prevents damage to the gasket and ensures quiet and trouble-free operation.

ELEGANT CHROME DETAILS

MAGNETIC STRIP

Ensures the water-tightness of the shower enclosure.

ELASTOMER SEALS

Resistant to changes in temperature and humidity.



An additional advantage is the way the door opens, i.e. swinging. When opening, the door can be conveniently opened outwards, while after use it can be placed in the "inward" position so that the water drains directly into the shower tray. When opening, the door gently rises, while when closing it settles on the shower tray, which makes the door more watertight.

2.5 RADAWAY SHOWER TRAY

<https://www.radaway.pl/>

The low aesthetic shower tray model is matched to the door model.

The tray has an antibacterial surface for easy cleaning.

3.0. LIGHTING

The fixtures planned for the apartment are supplied directly by the manufacturer. This is a Polish manufacturer, Zaho, comparable in quality to other leading commercial lighting manufacturers such as Lira Lighting and AQForm.

The Hold MD1 is a luminaire with a minimalist, simple and elegant shape. The slender shape of this fixture makes it a delicate, unobtrusive feature. The spot light can be directed anywhere, so that the character of the room can be changed with a single movement. The designed shape of the luminaire is unique and rare. <https://zaho.pl/>

From the manufacturer's website:

Zaho lighting was created out of fascination with light and its influence on the quality of life. For us, a luminaire is not only about construction and design, but above all about the quality of light, which affects human well-being. All products are designed and manufactured in a factory in Poland. We use electronic components and LEDs from the best world producers. The components supply chain is made up only of qualified suppliers with whom we have cooperated for years. We examine and test product prototypes in the laboratory before they are included in our permanent offer. Thanks to our own factory serving our group of companies, we have control over the whole production process. Many years of experience in the investment market allows us to support the investor and the architect in the implementation of the project, from the selection of luminaires, through calculations, to supervision over the implementation of the concept.



4.0. CARPENTER'S AND LOCKSMITH'S MATERIALS

LACQUERED FRONTS

The furniture is designed as plain elements in uniform colours. The best material to achieve a uniform colour in furniture is actually lacquer.

Lacquered fronts look extremely elegant and at the same time add a touch of class. It is not insignificant that they surprise us with a very wide range of colours and offer the option to make the elements of an original, irregular shape.

CONGLOMERATE WORKTOP

The worktop in the kitchen, but also the one in the bathroom, are designed from quartz conglomerate.

Next to stone, this is the best worktop material.

- high resistance to mechanical damage
- the material is stain-resistant and has lower surface absorption than natural stone. Even the most stubborn coffee, red wine or lemon juice stains can be easily removed with soapy water (conglomerate is used, for example, for worktops in laboratories)
- quartzite conglomerate is suitable for contact with food as conglomerate does not contain any toxic substances
- conglomerate has a compact structure, which makes it highly hygienic and antibacterial
- the material has a long service life
- quartz conglomerate is distinguished by colour consistency – the pattern is present throughout the thickness of the material
- jointless material connection
- over 90% natural components
- use of recycled raw materials in many products
- tests and certificates according to European and American standards

METAL ELEMENTS

Custom-made elements are designed to break up the cool colours and bring warmth and elegance to the interior. All small items are of the same colour and relate to each other, binding and closing the form of the interior.

5.0. UPHOLSTERED MATERIALS

All upholstered furniture is made by MTI Furninova. It is a Polish-Swedish manufacturer of high quality upholstered furniture.

<https://mti-furninova.pl/>

Every product that the company introduces to its range offer is first tested by the company itself, rejecting those items that do not meet the requirements without compromise. For more than 25 years, the products have been distributed to a wide range of customers around the world. During this time, products have won acclaim for their comfort, unique designs developed by renowned designers and a carefully selected collection of fabrics. The brand products can be seen in the most exclusive interior design stores (Moma Studio, BBHome, Design Concept and others).

The furniture in the apartment uses fabrics of the highest quality. The fabric of the upholstered lounge furniture is made with the "nano stop system". It is resistant to being splashed with wine or coffee.

Firstly, very little liquid soaks into the fabric – most of it runs off like on a duck's back. Any liquid what does soak in does not penetrate the fabric fibres, but remains as if it were on the surface, shallow enough to be removed with an absorbent paper towel. Thus, wine, coffee or even markers or wax stains can be removed in just a few moments. This is all thanks to the Nano Stop system – the fabric is not impregnated when it already makes a whole, but protected much earlier, at the level of the individual fibres. This also makes the fabric more resistant to wear, tear and dirt from everyday use, or simply dust. What's more, even old, dried-on stains can be easily removed after slightly dampening the fabric with water from a sprayer.

The sofa is equipped with a sleeping function based on an Italian frame.

There are sofas on the market that recline in a wide variety of ways. A sofa with a sleeping function is basically standard. The mechanisms used in such furniture include the Italian frame.

What is an Italian frame?

Its main feature is that it folds forward, e.g. by pulling on the backrest itself. It requires practically no effort from the user. In addition, the frame is distinguished by a high degree of stability, so that the user is guaranteed a restful night's sleep. Most importantly, sofas equipped with this mechanism also have a uniform mattress. There are no separate zones or recesses to compromise the comfort of your rest.

Why choose a sofa with an Italian frame?

Many users who have opted for a sofa equipped with an Italian frame emphasise that this solution gives almost as good a rest as a regular bed. All this is owing to the stability, as well as the use of a thick mattress, which retracts with the whole structure in the sofa.

Some people compare this solution to another frame, the so-called Belgian frame. Indeed, points of convergence can be found between the two. However, those who know what the Italian frame is, are also aware that it is an incomparably better alternative of similar mechanisms. Its superiority is manifested, among other things, in the greater stability of the structure, the option to use a thicker mattress and the fact that the seat does not have to be removed from the sofa in order to unfold it.

